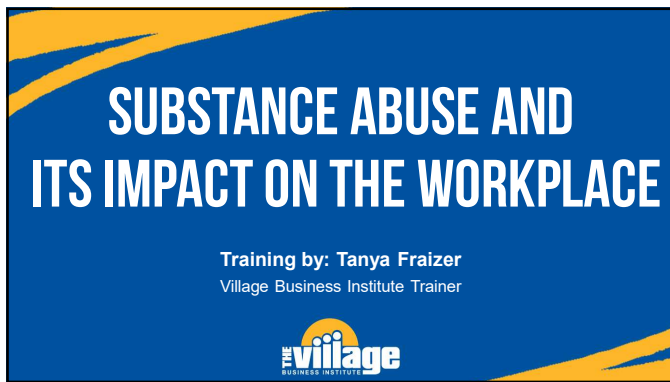




1



2



3



4




5



6

OBJECTIVES

- Review trends of substance misuse over the course of the last few years of heightened stressors.
- Identify challenges that businesses, including colleagues, face when working with employees navigating substance abuse and strategies to help them.
- Discuss The Village EAP's helpful role in maintaining workplace health and safety.

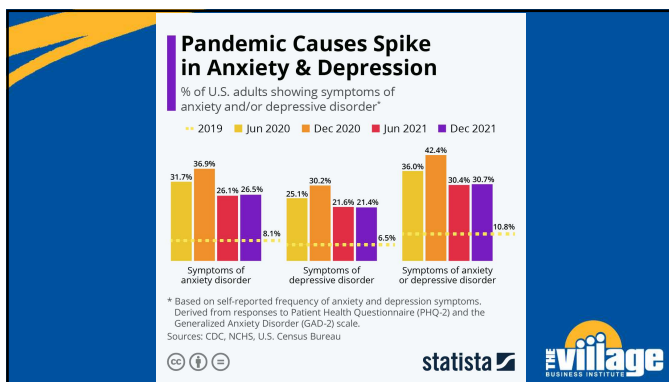


7

THE REALITIES OF COVID-19 AND ADDICTION




8



9

THE VARIETY OF IMPACTS, AS DEFINITION OF "WORKPLACE" CHANGED




10



11

SUBSTANCE ABUSERS AFFECT OTHER EMPLOYEES

UP TO 40%

OF INDUSTRIAL FATALITIES AND AND 47% OF INDUSTRIAL INJURIES
can be linked to alcohol consumption and alcoholism.



12

“BACK” AT WORK...




- 35% of patients with occupational injuries were at-risk drinkers
- 16% of emergency room patients injured at work tested positive for alcohol
- 11% of workplace fatality victims had been drinking at the time of the accident
- 70% of the estimated 14.9 million Americans who use illegal drugs are employed

www.facingaddiction.org/resources




13

HOW CAN I HELP A STRUGGLING CO-WORKER?




- Be aware
- Be honest
- Be connected
- Be supportive



14




15

 70% of employers felt guilty about their handling of employees' drug or alcohol addiction-related problems.

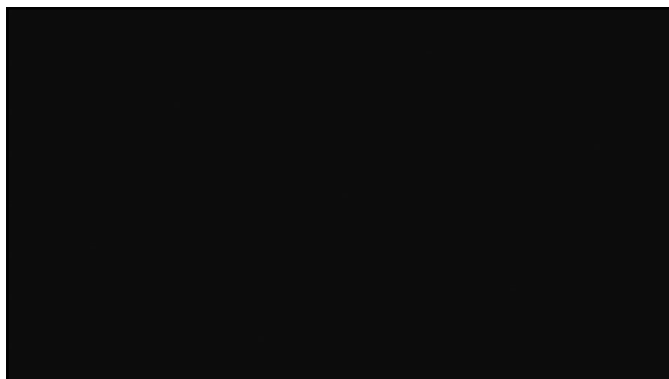
What Do Employers Feel Guilty Of?*

I could've reacted sooner	39%
I could've better handled general employee concerns	31%
I don't feel any guilt	30%
I could've more sensitively handled issues caused by the employee's addiction	25%
I could've treated the issue more privately	25%
I could've prevented workplace stress	23%
I could've reacted to the concern others showed for the employee	20%
I could've done more research on the topic	15%

*Only employers who have dealt with an employee issue concerning drug or alcohol addiction or use answered this question.



16



17



FIRST STEP RECOVERY
A Program of 

THE CAMEL EACH DAY GOES TWICE TO HIS KNEES.
HE PICKS UP HIS LOAD WITH THE GREATEST OF EASE.
HE WALKS THROUGH THE DAY WITH HIS HEAD HELD HIGH.
AND FOR THAT DAY STAYS COMPLETELY DRY.



18



EAP can help you with the following:

- Relationship Issues
- Workplace Issues
- Emotional Health
- Financial Counseling
- Drug/Alcohol Issues
- Legal Services

Call 1-800-627-8220 or visit www.VillageEAP.com

19



YOUR FEEDBACK IS WELCOMED



<https://www.surveymonkey.com/fr/NY8L3VM>

Call:
1-800-627-8220

Visit:
www.VillageEAP.com

SHERM Credit – Activity 22-NUYS7

20